

Building capacity for sustainable delivery of pharmaceutical care

Dr Alison Roberts

Executive Director, Policy, Advocacy & Innovation

Pharmaceutical Society of Australia

Improving the health of Australians
through excellence in pharmacist care

Creating a brighter future for pharmacists
through:

- Advocating excellence in pharmacist practice
- Positioning pharmacy for the future through innovative and sustainable models of practice

“PSA is the peak national body for pharmacists”

Pharmacists in Australia are one of the largest, most trusted and most accessible groups of health professionals

- but they are not utilised to their full scope

Community pharmacies have provided, and will continue to provide a vital network

- for primary and preventative community-based health care

Opportunity for Government and other payers to ensure that pharmacists' unique skills and expertise are better utilised

- as part of innovative, collaborative care models to contribute to better health outcomes

"PSA is the peak national body for pharmacists"



Advocating for new roles & career pathways



Negotiating with other stakeholders to secure funding for these roles



Supporting a viable community pharmacy sector through Health Destination Pharmacy



Developing standards & guidelines, courses, qualifications, CPD, to enable it to happen

"PSA is the peak national body for pharmacists"

Sustainability of Pharmacy Services: Advancing Global Health

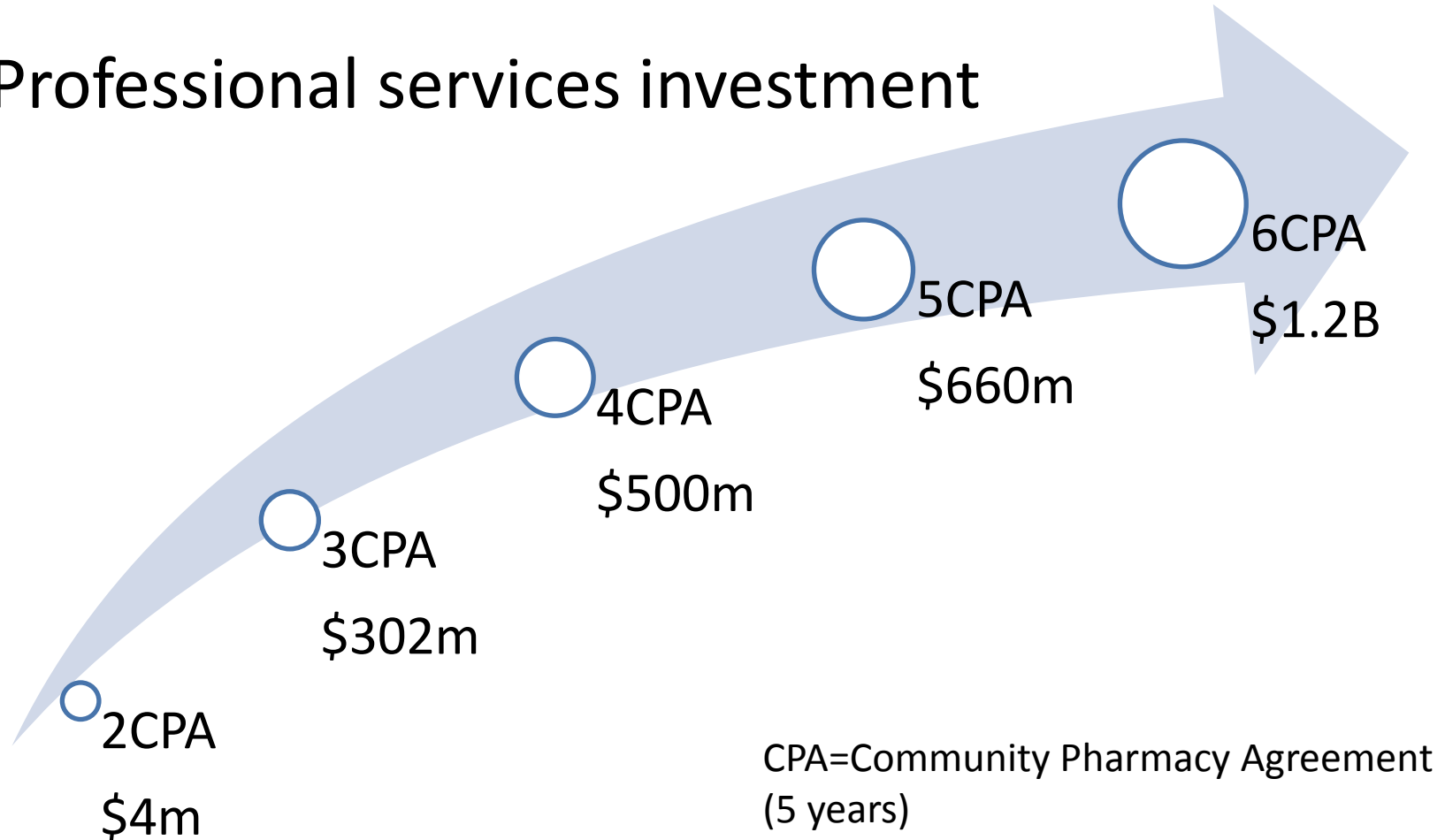
International overview
of remuneration models
for community and
hospital pharmacy

2015

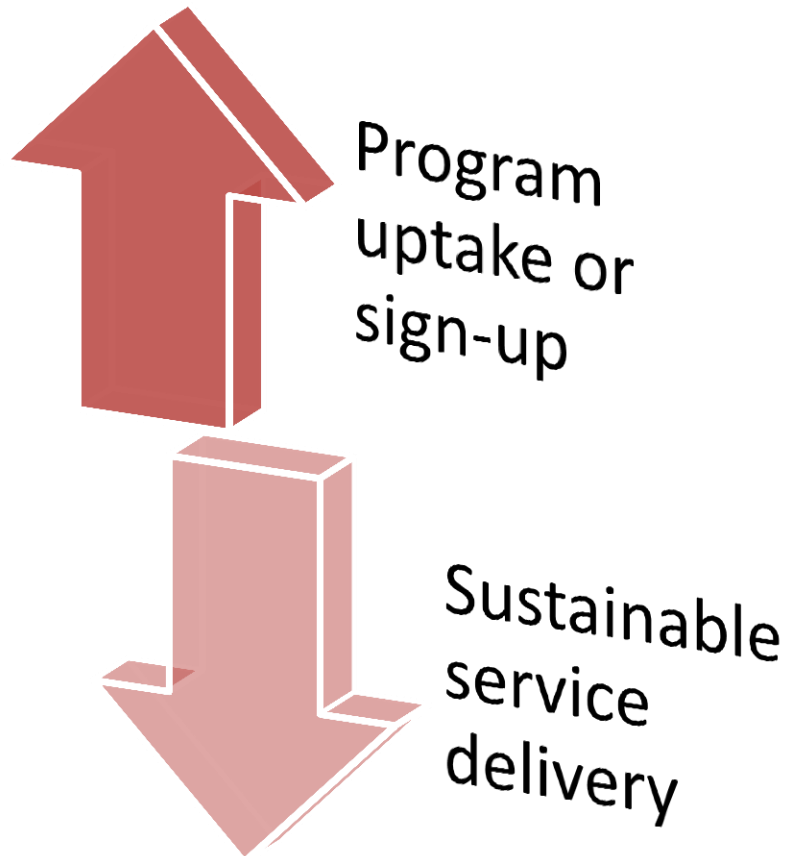


HEALTH
HEALTH HEALTH
HEALTH HEALTH
HEALTH
HEALTH HEALTH
HEALTH HEALTH
HEALTH HEALTH HEALTH HEALTH
HEALTH HEALTH HEALTH HEALTH
HEALTH HEALTH HEALTH
HEALTH HEALTH HEALTH
HEALTH HEALTH HEALTH HEALTH
HEALTH HEALTH HEALTH HEALTH
HEALTH HEALTH
HEALTH HEALTH
HEALTH HEALTH
HEALTH HEALTH
HEALTH HEALTH
HEALTH HEALTH
HEALTH HEALTH
HEALTH HEALTH

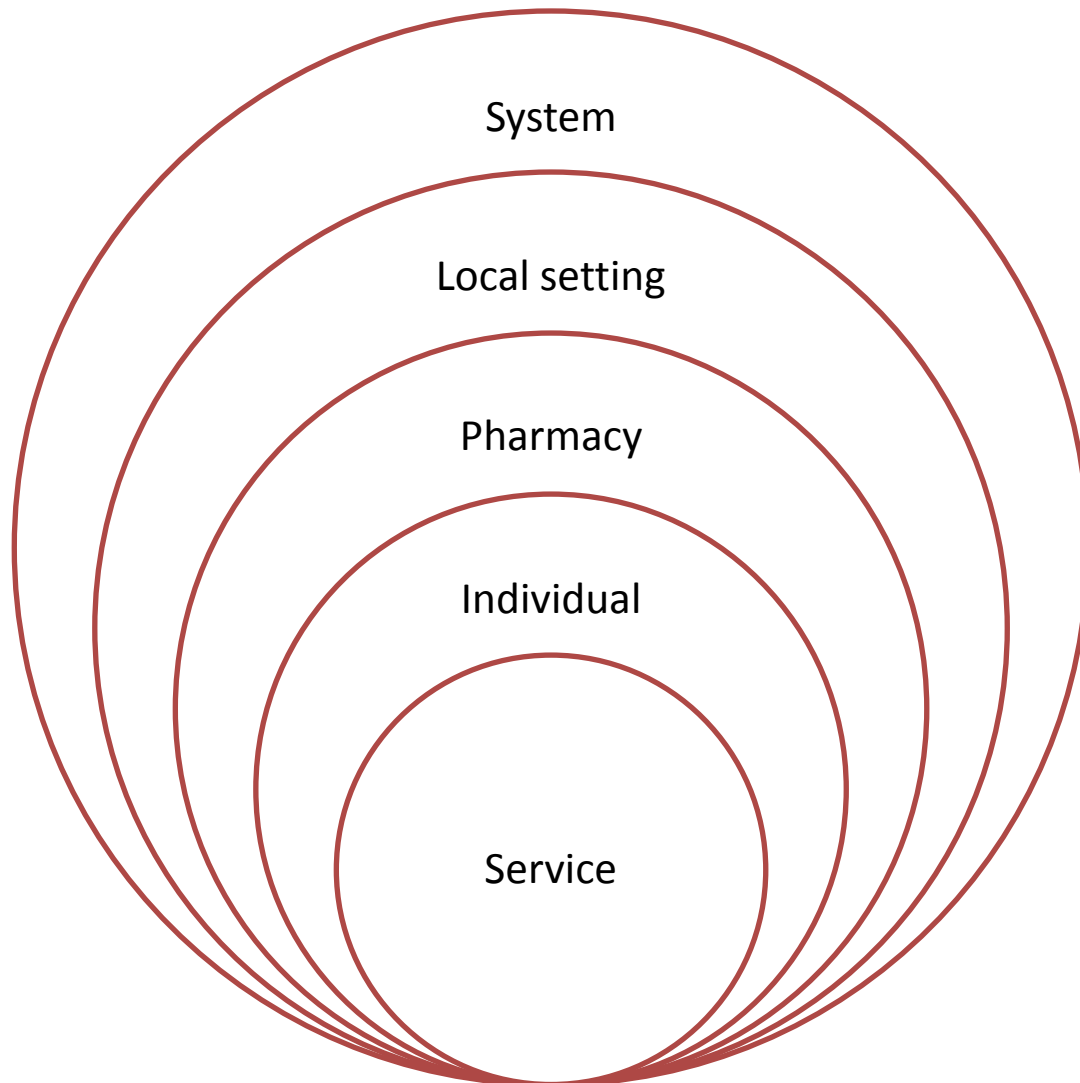
Professional services investment

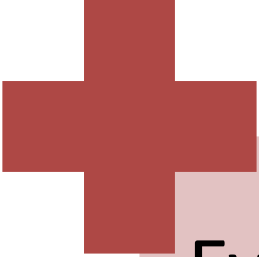


"PSA is the peak national body for pharmacists"



“There was no overarching plan for rollout of programs and consideration of how projects and programs interrelate and how this might be better managed from the perspective of pharmacists participating in the programs”





Evidence of
outcomes from
a program or
service

Usability in
practice and
ease of
implementation

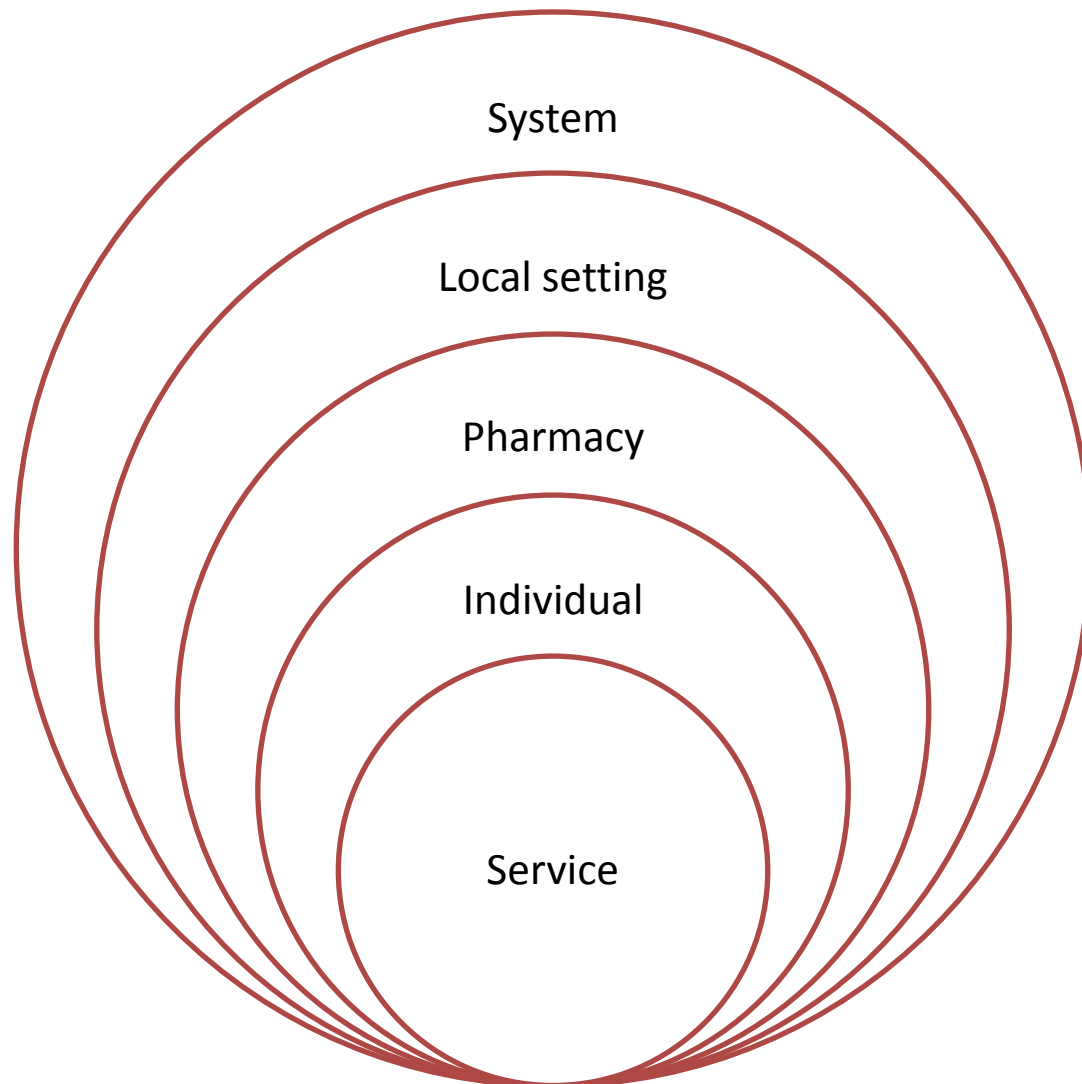
Schroeder JA. Integrating implementation science, practice and policy. Chapel Hill, North Carolina: University of North Carolina, FPG Child Development Institute; 2011.

Fixsen DL, Naoom SF, Blaske KA, Friedman RM, and Wallace F. Implementation research: A synthesis of the literature. Chapel Hill, North Carolina: University of North Carolina, FPG Child Development Institute; 2005.

“Implementation of programs and practices should not be viewed as “plug and play” where, somehow, new practices can be successfully added to ongoing operations without impacting those operations in any significant way.”

Fixsen DL et al (2005). *Implementation Research: A Synthesis of the Literature*. Tampa, FL. The National Implementation Research Network

“PSA is the peak national body for pharmacists”



“Pharmacists are being urged to change their practice, but many do not have a clear picture of how the new practice model is to fit into current reality”¹

“It is still very difficult to implement changes in daily pharmacy practice.”²

“Individuals cannot benefit from interventions they do not experience”³

1. Holland, R.W. and C.M. Nimmo, Am J Health Syst Pharm, 1999. 56(17)

2. Bouvy, M.L., Int J Pharm Pract, 2012. 20

3. Schroeder, J.A (2011). *Integrating implementation science, practice and policy*. National Implementation Research Network

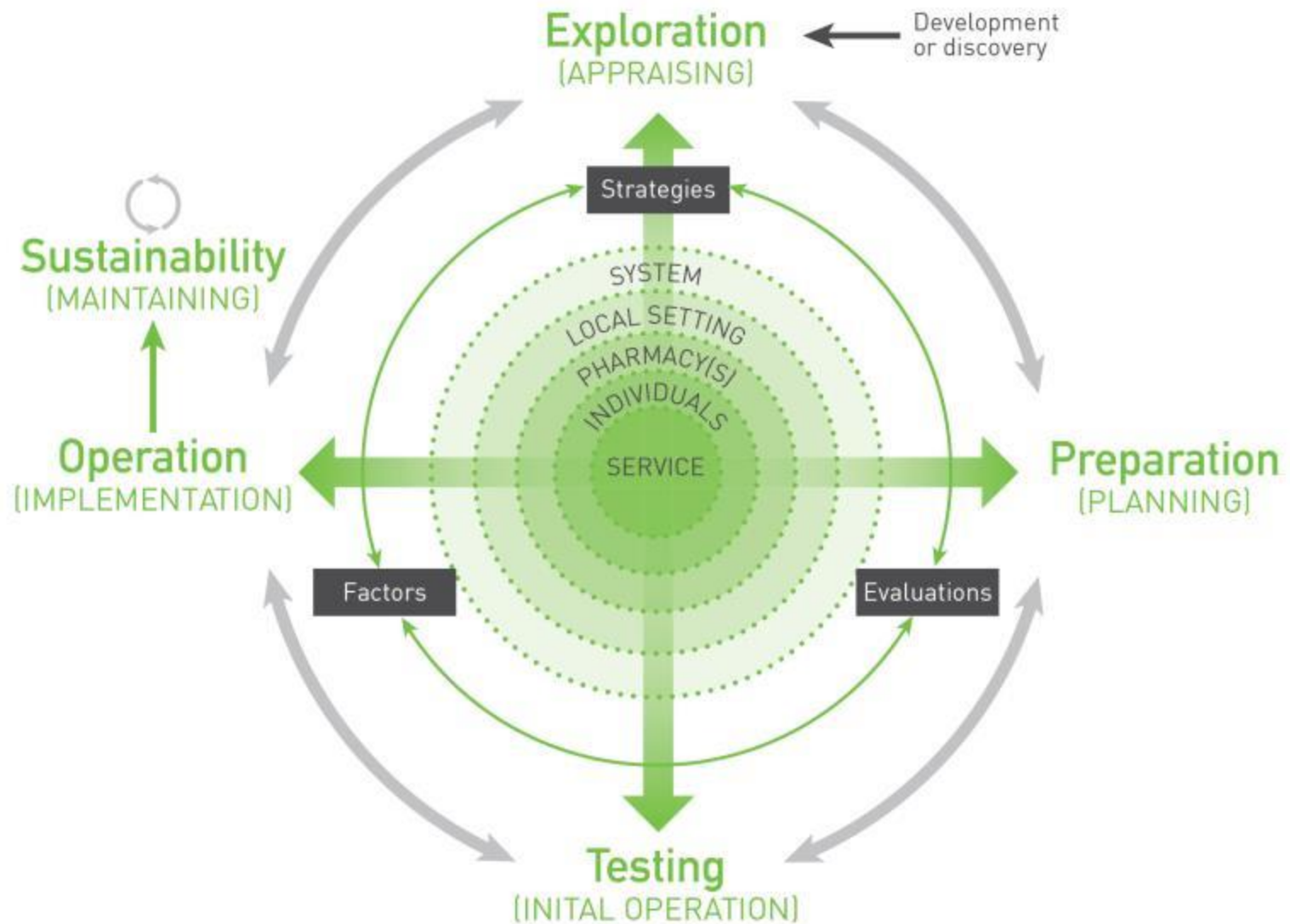
Community pharmacies respond to targeted, on-site support to assist with practice change and build capacity

“Trained people visit clinicians where they practice and provide them with information to change how they practice. The information given may include feedback about their performance, or may be based on overcoming obstacles to change...”



“PSA is the peak national body for pharmacists”

Framework for Implementation of Service in Pharmacy (FISpH)¹



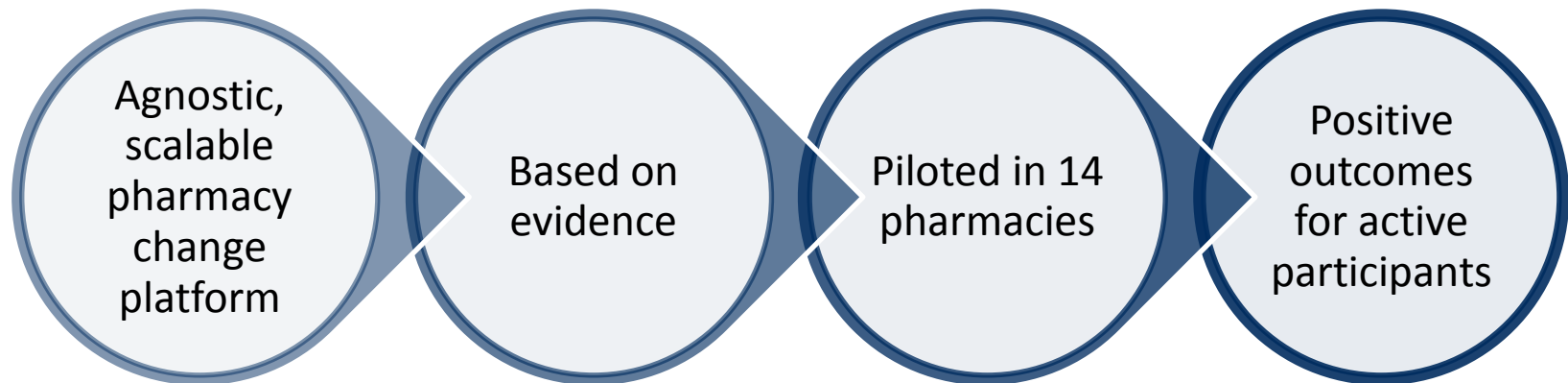
Health Destination – a tested health service model for pharmacy



Tried and tested

“There is currently no platform to deliver to pharmacies to help them realise the potential”

David Quilty, Pharmacy Guild
Pharmacy Management Conference, 31 July 2014

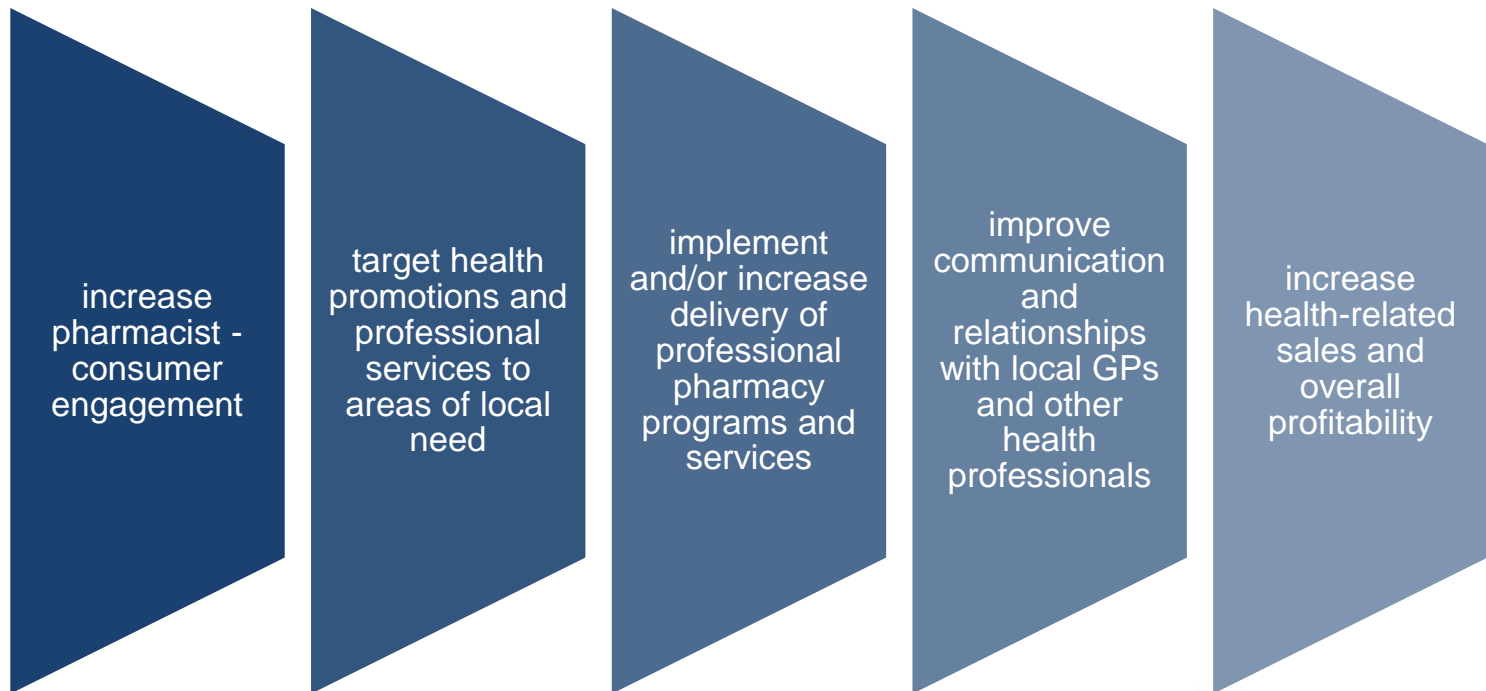


From the 'race to the bottom' .. to a health service model

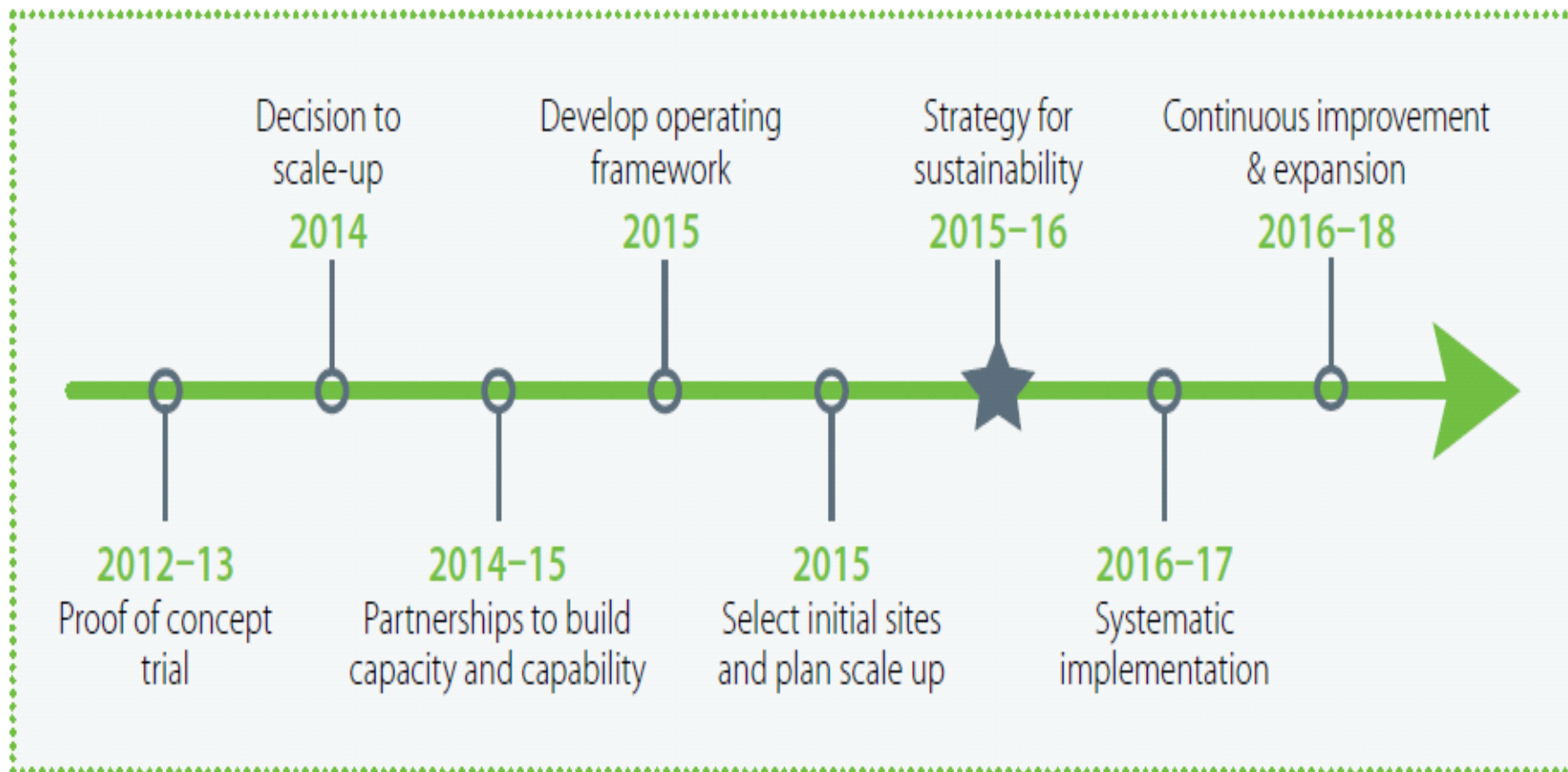


Trial results

- By working with a coach, it is feasible for pharmacies of different sizes, locations and staffing levels to:



Scale-up timeline





Health Destination Pharmacy is brought to you by PSA and a range of industry partners that support improved outcomes for consumers and sustainability of the pharmacy sector.



Health Destination Pharmacy

GIVE
YOUR
PHARMACY
—
THE

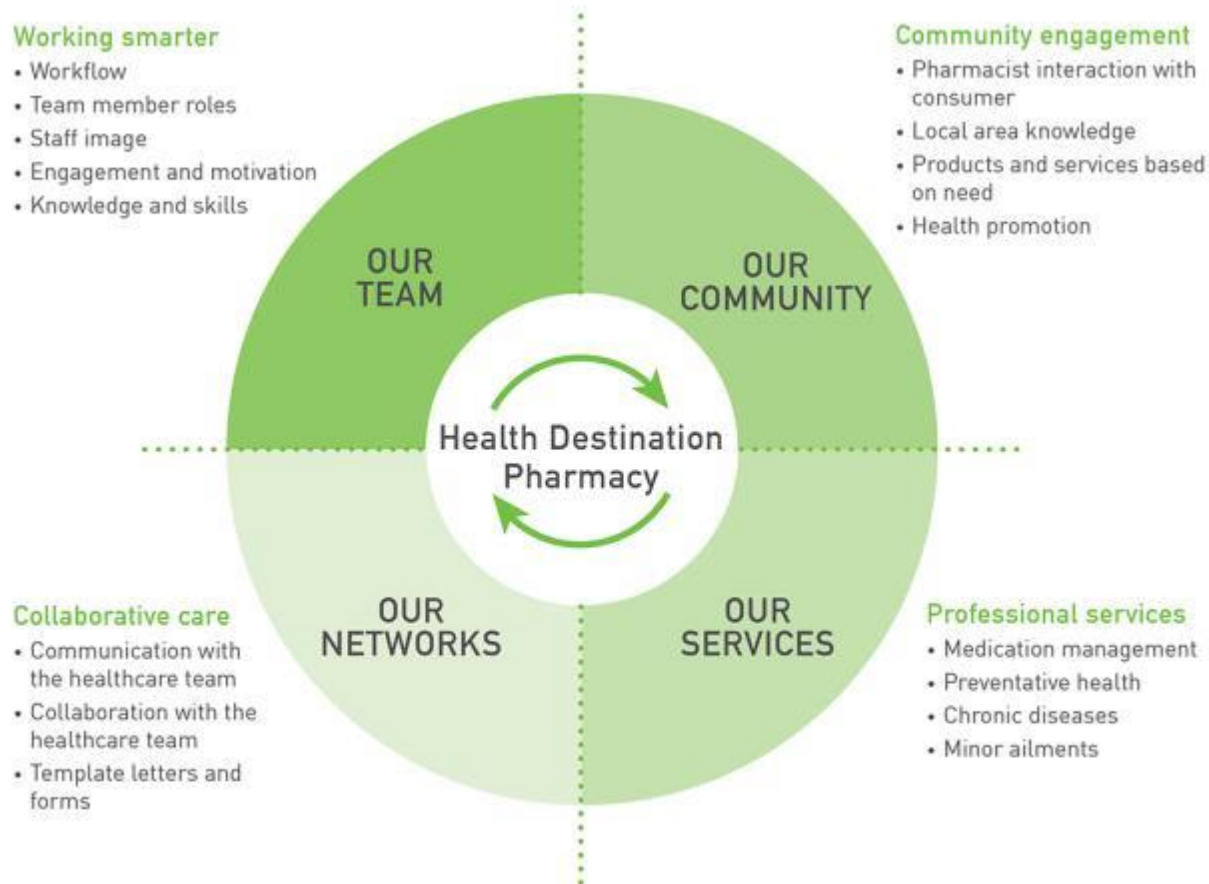
FACTOR



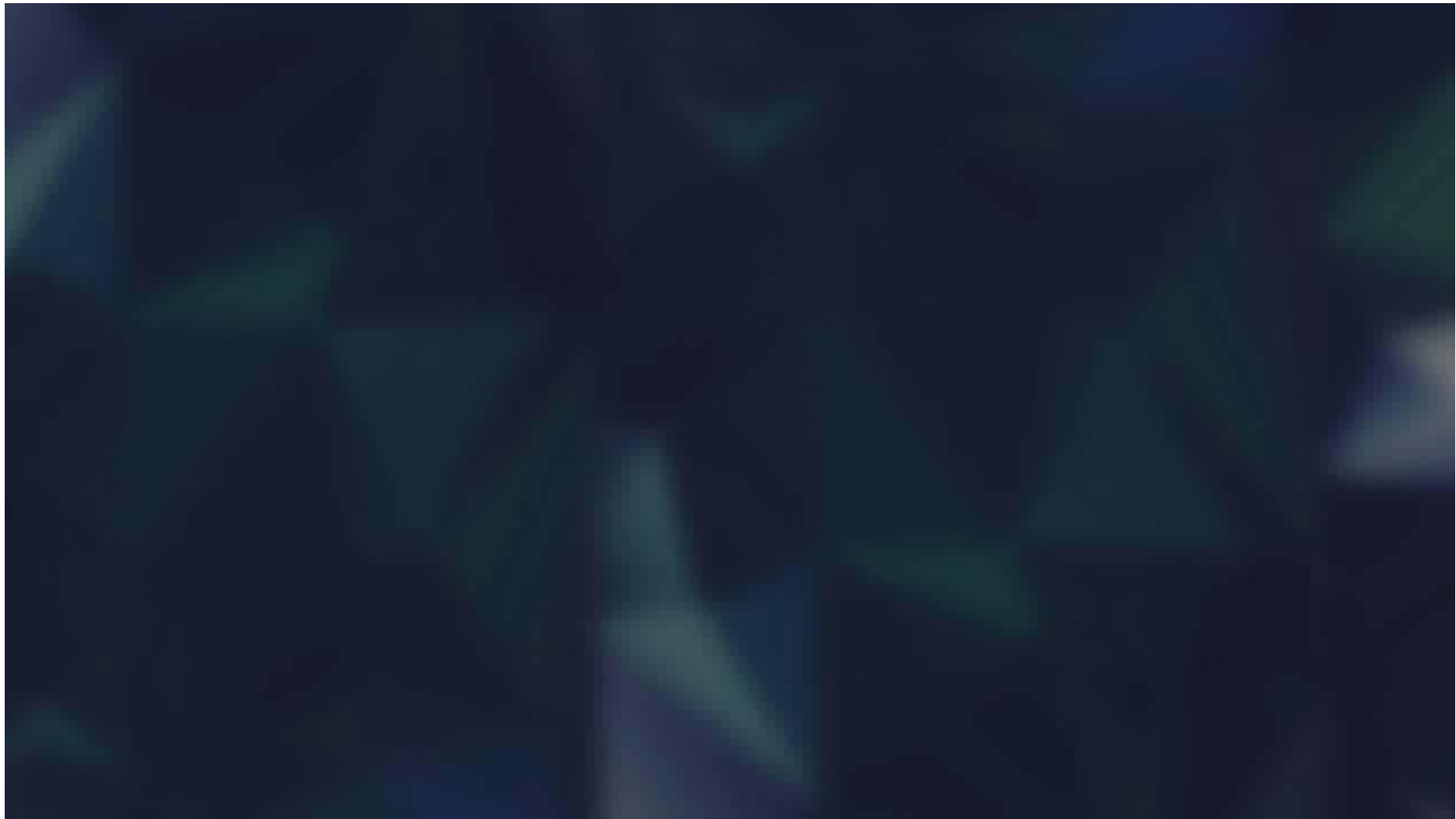
Talk to one of our
team members about
becoming a Health
Destination Pharmacy



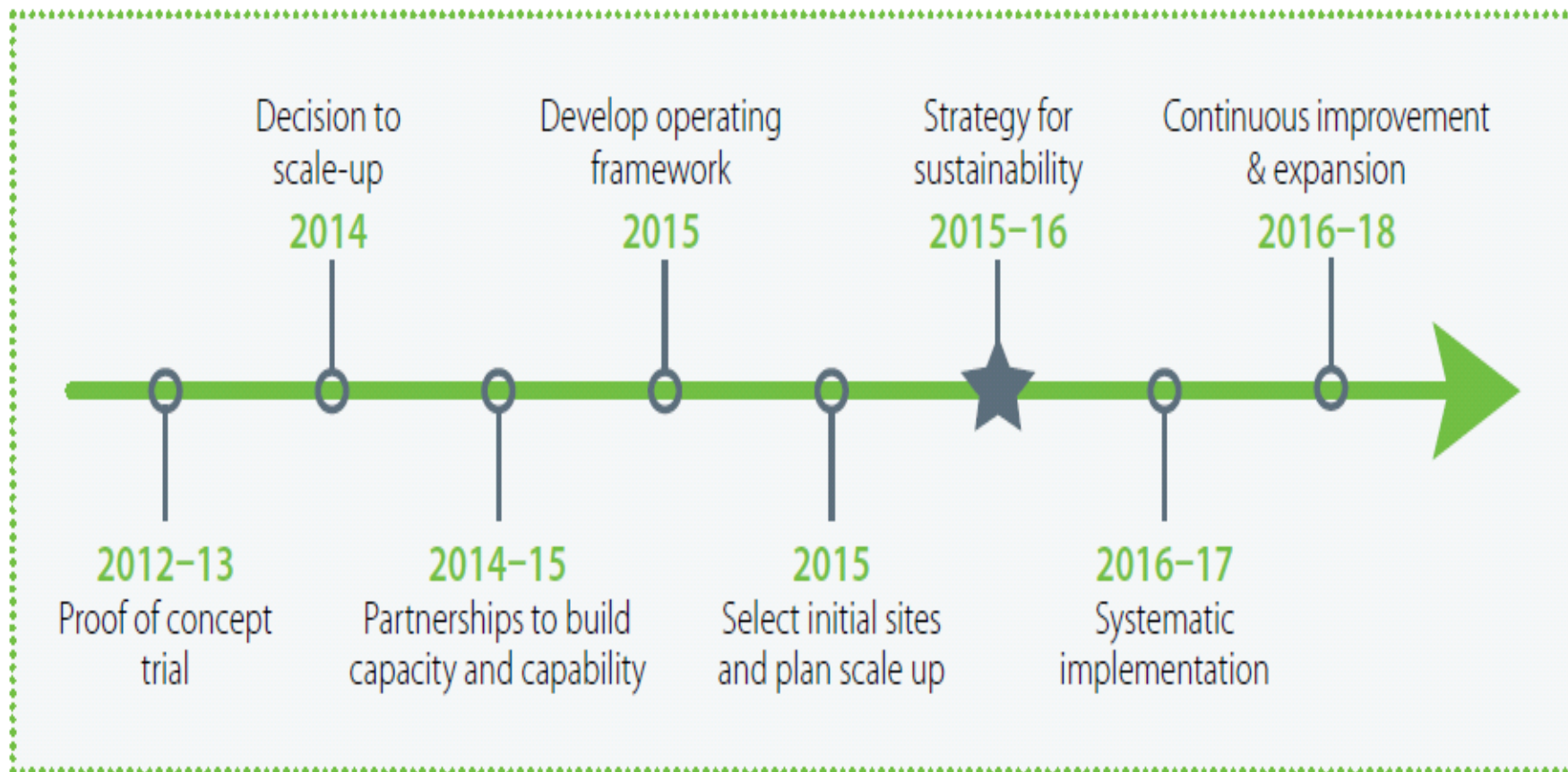
Health Destination Pharmacy focus areas



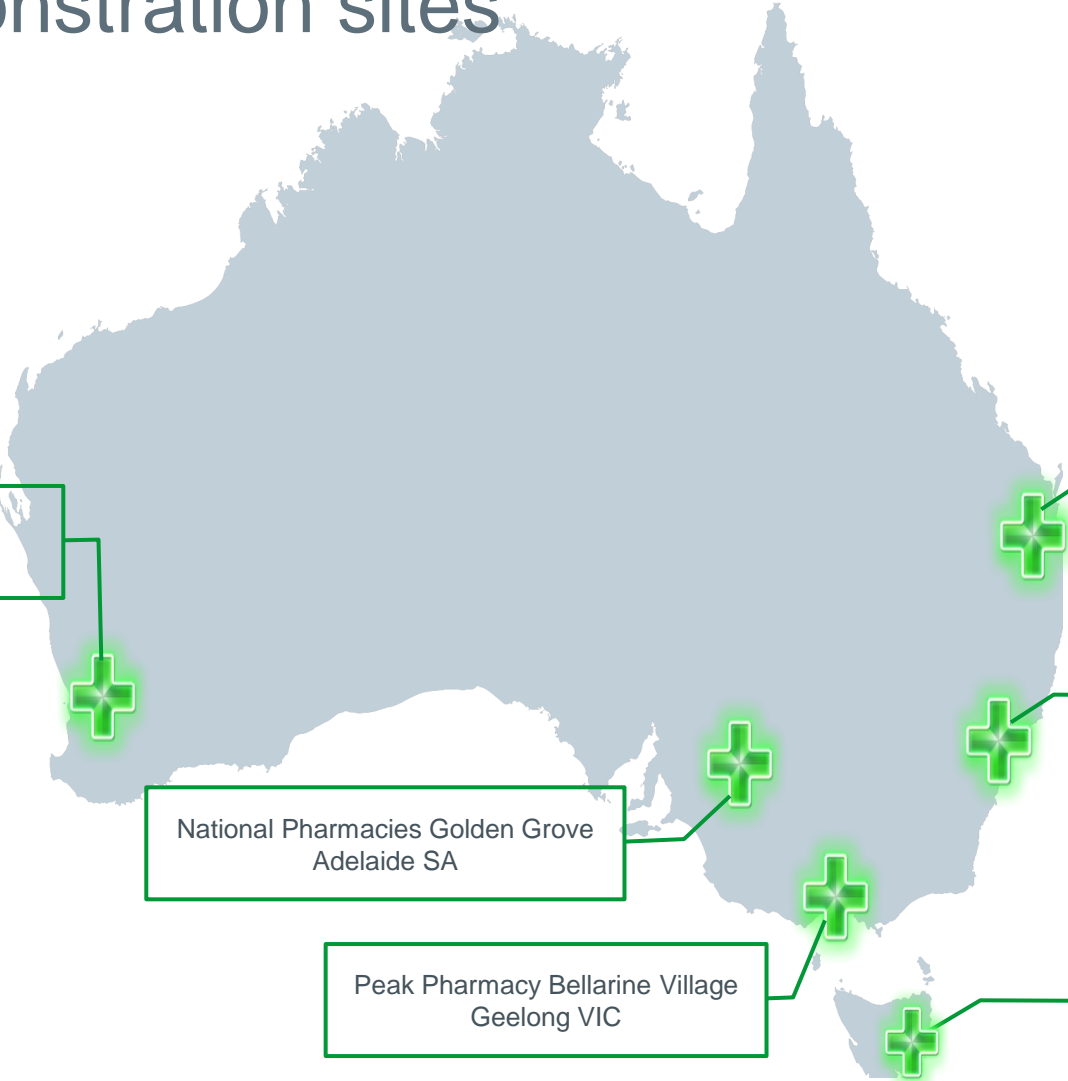
“There is evidence that tailored knowledge translation interventions targeting known barriers to change in professional behaviour are effective when they are based on identified barriers to change”



Scale-up timeline



Demonstration sites



Northlands Pharmacy
Perth WA

National Pharmacies Golden Grove
Adelaide SA

Peak Pharmacy Bellarine Village
Geelong VIC

Eagle Heights
Pharmacy
Eagle Heights QLD

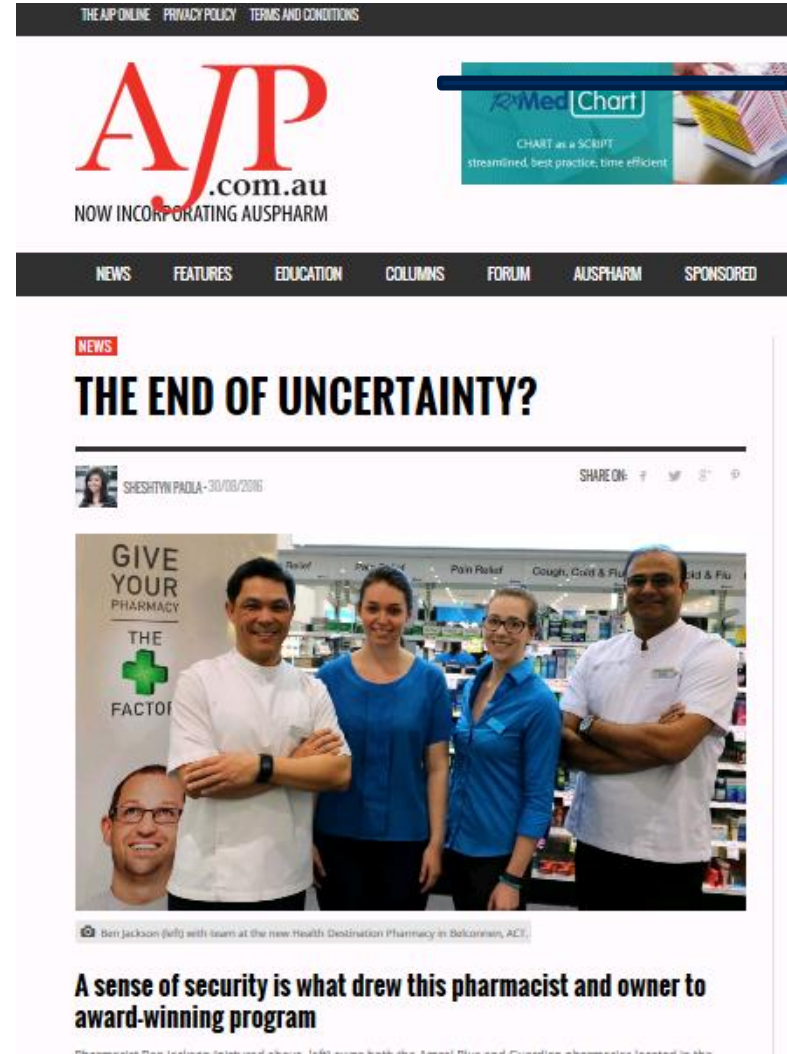
Cincotta Chemist Mascot
Sydney NSW

Risdon Vale Pharmacy
Hobart, TAS

What it means to pharmacy owners

“I’ve been in the game for 35 years now. Right now there’s uncertainty about remuneration – the goalposts keep changing...but with Health Destination, there’s someone else reinventing the wheel, there’s backup involved”

“Sooner or later all pharmacies will have to do this. If we don’t reinvent ourselves we’ll fall behind.”



THE AJP ONLINE | PRIVACY POLICY | TERMS AND CONDITIONS

AJP
.com.au
NOW INCORPORATING AUSPHARM





MedChart
CHART as a SCRIPT
streamlined, best practice, time efficient


NEWS | FEATURES | EDUCATION | COLUMNS | FORUM | AUSPHARM | SPONSORED

NEWS

THE END OF UNCERTAINTY?

SHESHLYN PADLA - 30/09/2016

SHARE ON:    



GIVE YOUR PHARMACY THE FACTOR

Ben Jackson (left) with team at the new Health Destination Pharmacy in Bekovaram, ACT.

A sense of security is what drew this pharmacist and owner to award-winning program

Head Later

Accreditation Number: A1004PM. This activity has been accredited for 0.5hrs of Group 1 CPD for 0.5 CPD credit available for inclusion in an individual pharmacist's CPD plan which can be converted to 0.5hrs of Group 2 CPD for 1 CPD credit upon successful completion of relevant assessment activities.

Home / News / Latest news /

We were unable to verify your details. Please update your profile by clicking here.

How to grow your pharmacy's profit by 13%

29 August, 2018 | Lexa Hoffman | 2 comments | Head Later

Facebook, Twitter, LinkedIn, Email, Print

A Tasmanian pharmacy says becoming a PSA-style health destination ticks all the boxes, from healthier profits to happier customers...

Katie Hayes (pictured), a partner at Risdon Vale Pharmacy, says health-related product sales have risen every quarter since it joined the program last October, and the pharmacy has quickly become known as a place to go in some situations when the GP is booked out.



The pharmacy is one of 25 taking part in the program, which has just scooped an international award. This follows trials which show it drove 13% gross profit growth over nine months in participating pharmacies.

Ms Hayes says taking part in the program, which costs the business \$1500 per month, helped it identify the needs of its community, which has low health literacy and a high rate of chronic disease.

Latest News

- What's happening pharmacy vaccination roll-out?
Women at risk of heart attack misdiagnose
10 steps to treating chronic headache
81 areas where Chemist Warehouse is starting a claim
Middle-age men at highest risk of overdosing

4EEL0NADVERTISER.COM.AU WEDNESDAY APRIL 26 2018

NEWS 05

Our new-look model a first for the state



MORE SERVICES Pharmacist Greg Porto with customer Monika Galgala at Belair Village Peak Pharmacy, which has been transformed into a Health Destination.

Pharmacy of future

CLARE MARTIN

"The key is getting the pharmacists out of that back counter - really engaging and trying to identify unmet needs."

PHARMACY'S GOOD PORTE

600,000 patients will receive more hands-on care and better medication management under Victoria's first Health Destination pharmacy.

Colony's Belair Village Peak Pharmacy near Greg Porto said becoming a Health Destination pharmacy had been a very positive move and had allowed them to provide a

"Get your bag of medicine and bring it in - we'll go through it and what's all correct, what's expired and what you don't need," he said.

Mr Porto said this would help in decreasing the amount of people who end up in hospital after medication misuse.

doctor print them off and it's my role," he said.

PSA national president Joe Daniels said the program had been extremely tested and was proved to provide greater support for pharmacists and customers.

Dogs chase suspect to ground

SEN PEACOCK

Dogs guard suspect pulled a man from under a bloody fence after a lengthy search across Goolgool's road.

Police said they had tried to arrest a 25-year-old Baw-wan man on his way to the Porters Hill Hotel before he fled through nearby paddocks about 5.5pm on Monday.

The man was tracked over an adjacent agricultural business in February involving a fence.

Police said the search lasted more than two hours and nearly a day's work.

Police said the man was eventually found hiding under a fence in High St, Alford, and taken into custody.

He's being approached by police and several related offences.

He is expected to appear in Goolgool Magistrate's Court later this week.

Part-time a midlife work lift

MIDDLE-AGED workers should be able to part-time because working 3-5 1/2 hours is best for them.

And if they're doing lots of overtime their brain is performing worse than if they were unemployed.

These are the findings of a study of 6000 Australians aged over 40 that was conducted by Japanese researchers and published by the Melbourne Institute of Applied Economic and Social Research.

For consumers

“People see pharmacy as an accessible health service and a strong majority would like to see their pharmacy play a larger role in primary care in the community.”

““Consumers would like to see pharmacists not only provide advice on medication but also care for minor ailments and vaccinations.”

News & Media

[Home](#) / [All media releases](#)

Pharmacy's international award a step forward for health consumers

20 August 2016 – [Media release](#)

An international award for an Australian pharmacy initiative providing tailored consumer health care is welcome recognition of moves towards patient-centred health services, the Consumers Health Forum says.

“We congratulate the Pharmaceutical Society of Australia on this honour awarded for their Health Destination program by the International Pharmaceutical Federation,” the CEO of the Consumers Health Forum, Leanne Wells, said.

“This is recognition of the PSA's steps to promote practice improvement by emphasising the pharmacy as a health destination for consumers which also encourages closer collaboration with other health practitioners, particularly GPs.

“A CHF survey in the past year has shown that people see pharmacy as an accessible health service and a strong majority of those surveyed would like to see their pharmacy play a larger role in primary care in the community.

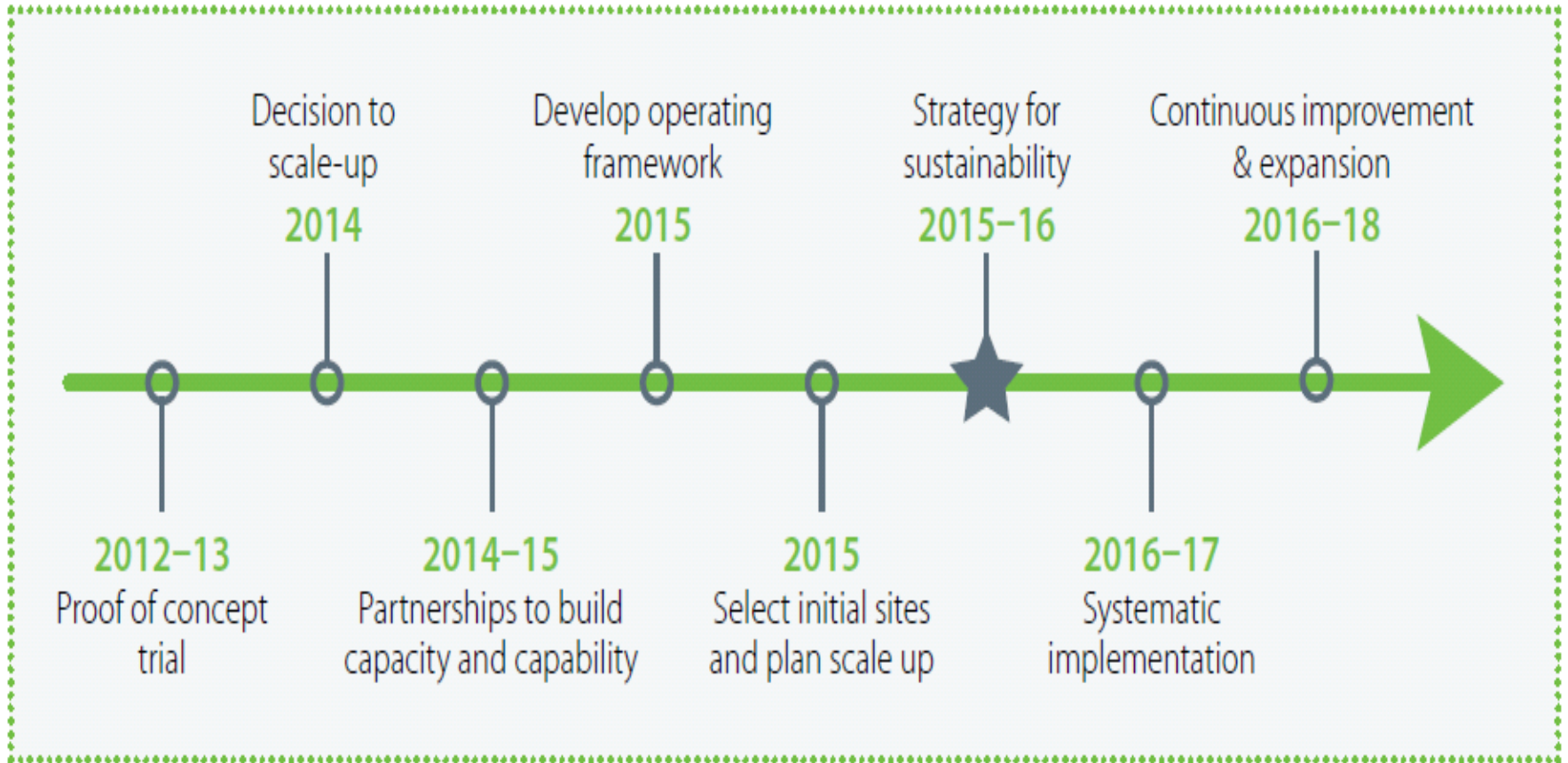
“Consumers would like to see pharmacists not only provide advice on medication but also care for minor ailments and vaccinations.

“At the same time, consumers also told us that they want to see better communication and coordination between their pharmacist and GP: they don't want their care further fragmented. Arrangements advocated by the Health Destination initiative which promote co-operation between providers, continuity, and which step people up into comprehensive, integrated services such as patient-centred health care homes are especially welcome, particularly for people with complex conditions.

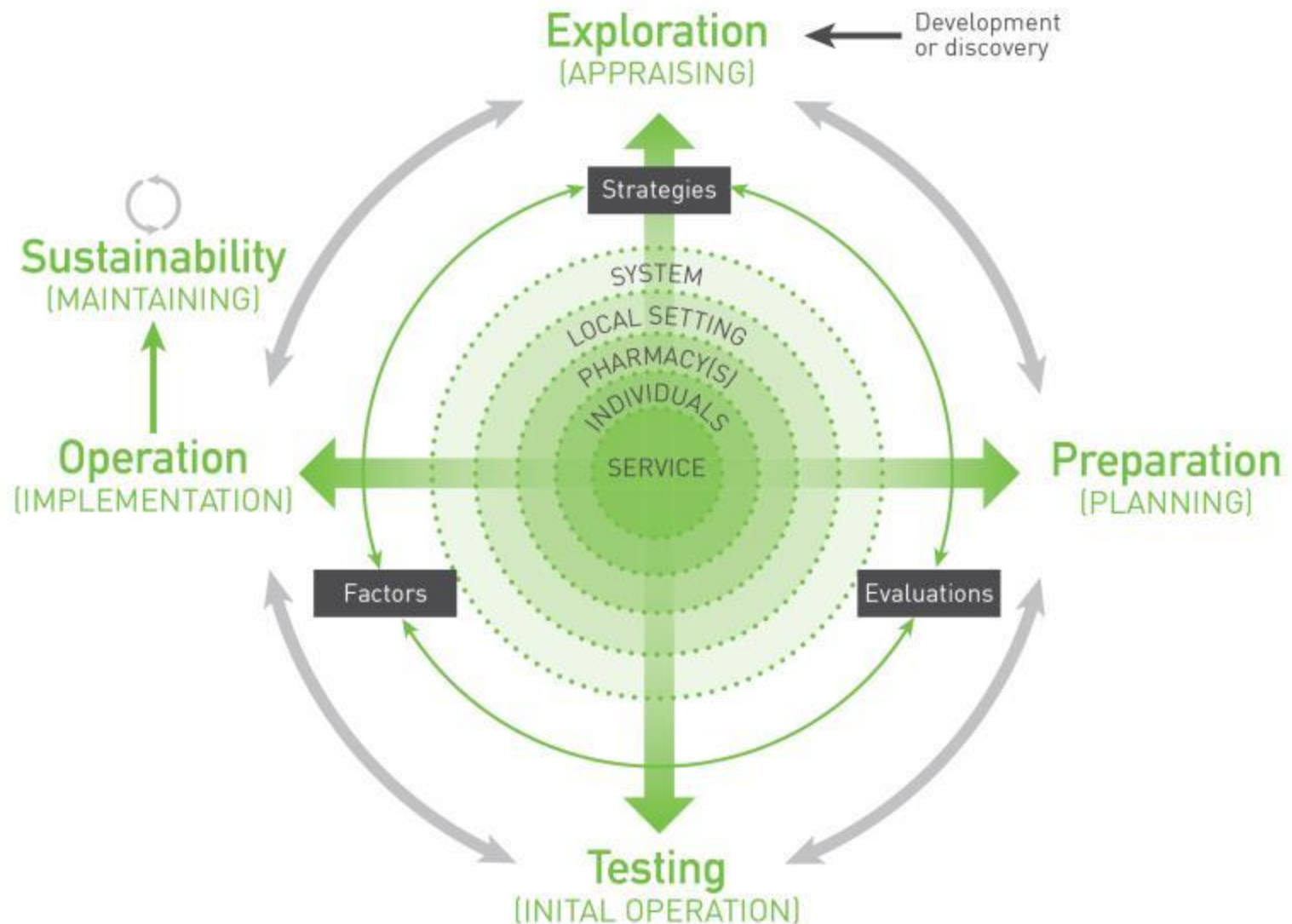
“The PSA's Health Destination program which has been taken up by more than 25 pharmacies provides a new direction for community pharmacy to work collaboratively with other health care providers.

“Pharmacy must be a significant part of Health Care Homes now being trialed by the federal Government to provide better coordinated team-based care for those with chronic and complex conditions.

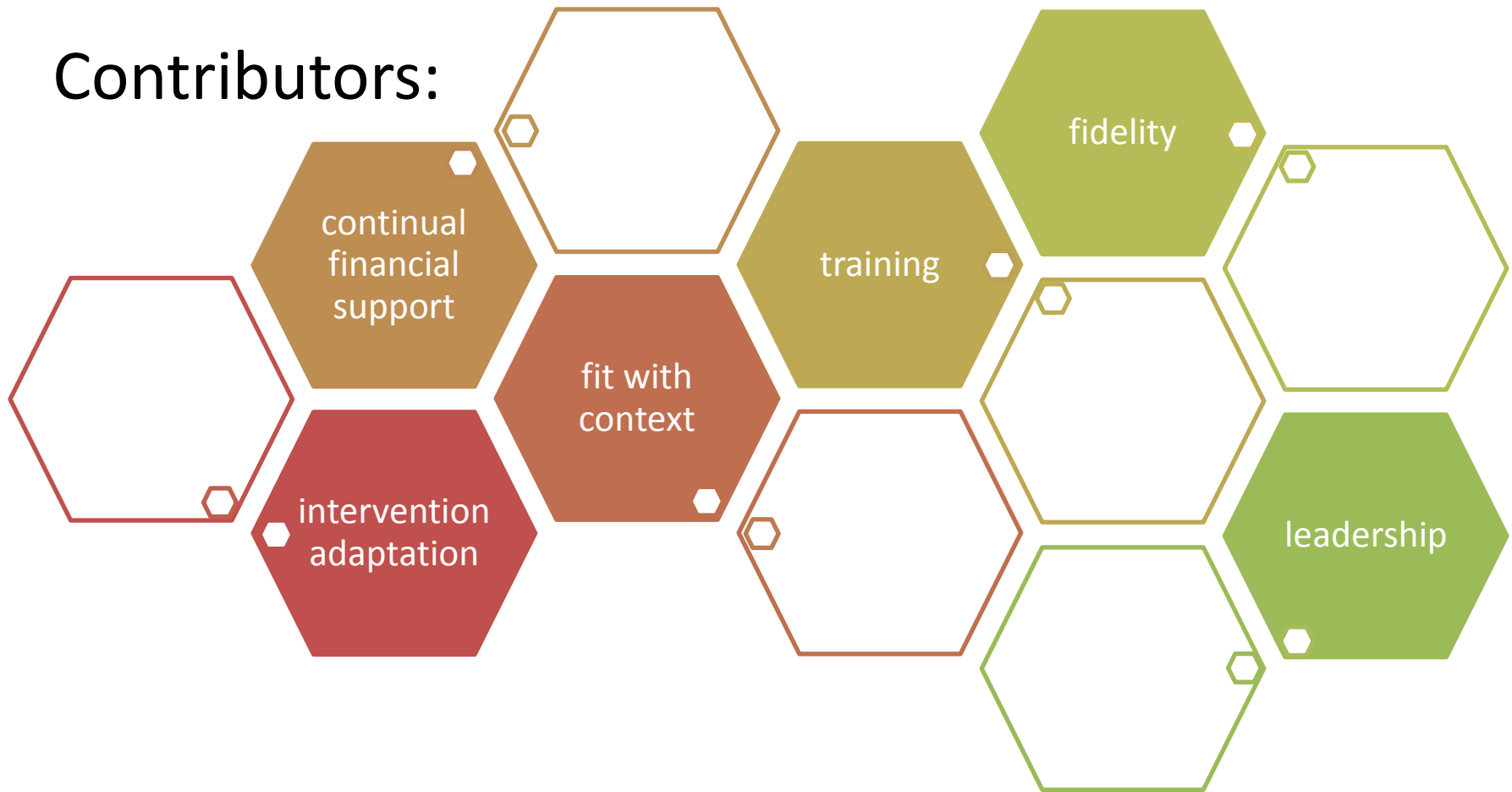
There is still plenty to do



Framework for Implementation of Service in Pharmacy (FISpH)¹



Contributors:



Health Destination Pharmacy

Hello

Talk to one of our team members about becoming a Health Destination Pharmacy

GIVE YOUR PHARMACY
THE

FACTOR

International Pharmaceutical Federation (FIP) Award

2016 Pharmacy Practice Improvement Award

UTS-Astra Zeneca

2016 Innovative Pharmacist of the Year Award

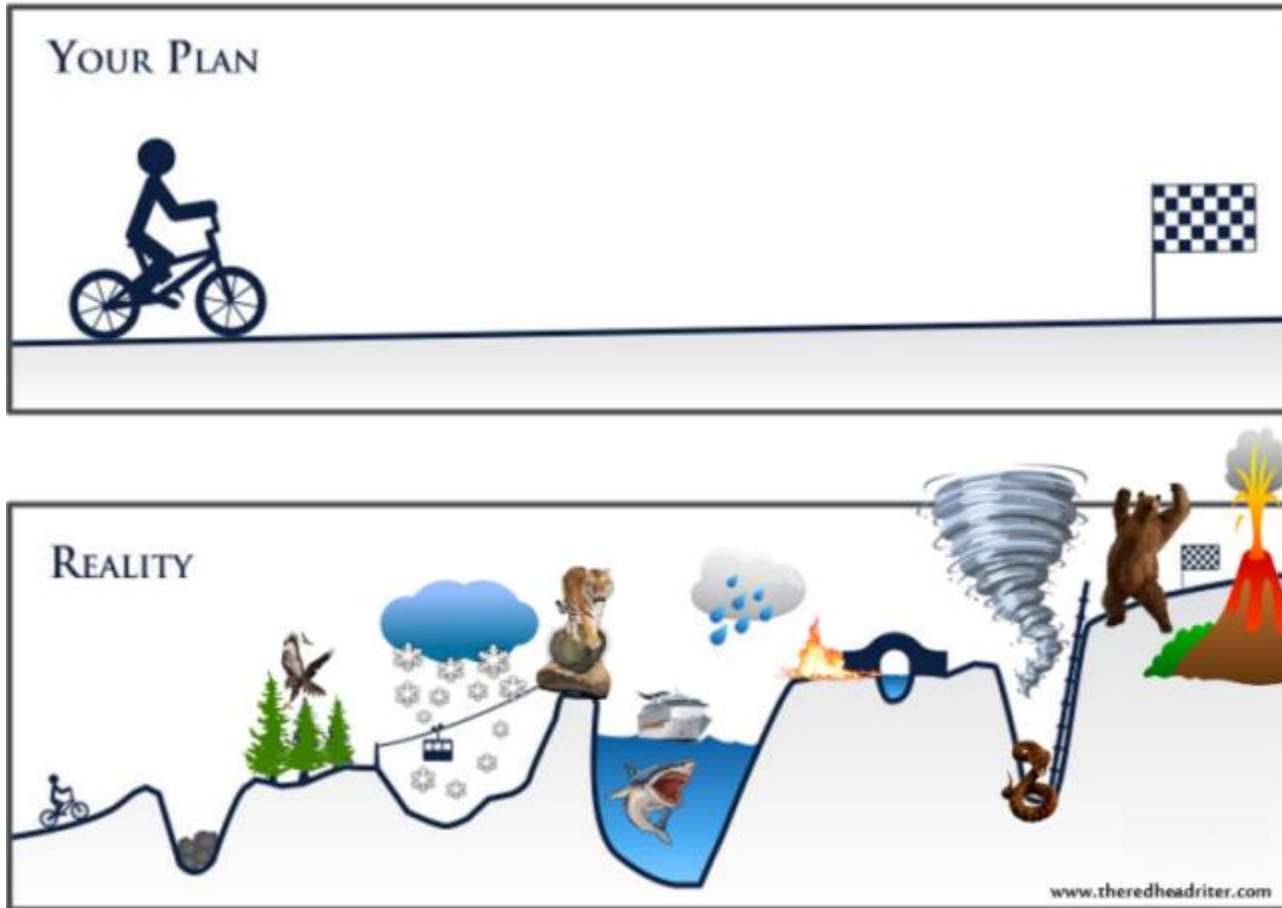
Public Relations Institute of Australia

2016 Golden Target Award



"PSA is the peak national body for pharmacists"

Building literacy on change



THE FACTOR



MEANS... GROWTH 3X BETTER THAN THE REST*

After only 6 months, Health Destination Pharmacies are already making real changes and experiencing real results. The program uses a tried and tested whole-of-business approach, with onsite support delivered by our expert coach network.

Don't get left behind.



ENQUIRE TODAY.
Hear from those in the program
www.healthdestinationpharmacy.com.au | 1800 303 270

*Difference between industry average and Health Destination Pharmacies, on average sale growth (March 15 to Mar 16).



CHANGE IS FULL OF THE UNEXPECTED

If you're investing in change, choose a program with strong evidence for success.

THE ESSENTIALS OF A PHARMACY CHANGE PROGRAM:

BEST EVIDENCE OF WHAT WORKS	HEALTH DESTINATION
Tried and tested results with proven financial return*	+
A sustainable business model, beyond professional services	+
Practical, onsite, support	+
Advice from expert pharmacist coaches trained in change	+
Help with staff culture, work flow, and pharmacist-consumer engagement	+
A focus on collaboration with local health professionals	+
Financial tracking and benchmarking	+
Moves the pharmacy from change to sustainability	+
Recognition for the pharmacy as an essential part of the health system	+

*Demonstrated through the pilot program of Pharmacies in the health destination trial (2012-2013)

Change is more than ticking boxes. It's a bumpy ride that requires practical assistance to ensure success.

With the expertise in change, the PSA knows this can only be achieved with onsite support and a tried and tested whole-of-business approach.

Health Destination is a program and model that is proven to work.
That's why it is backed by the industry's best.

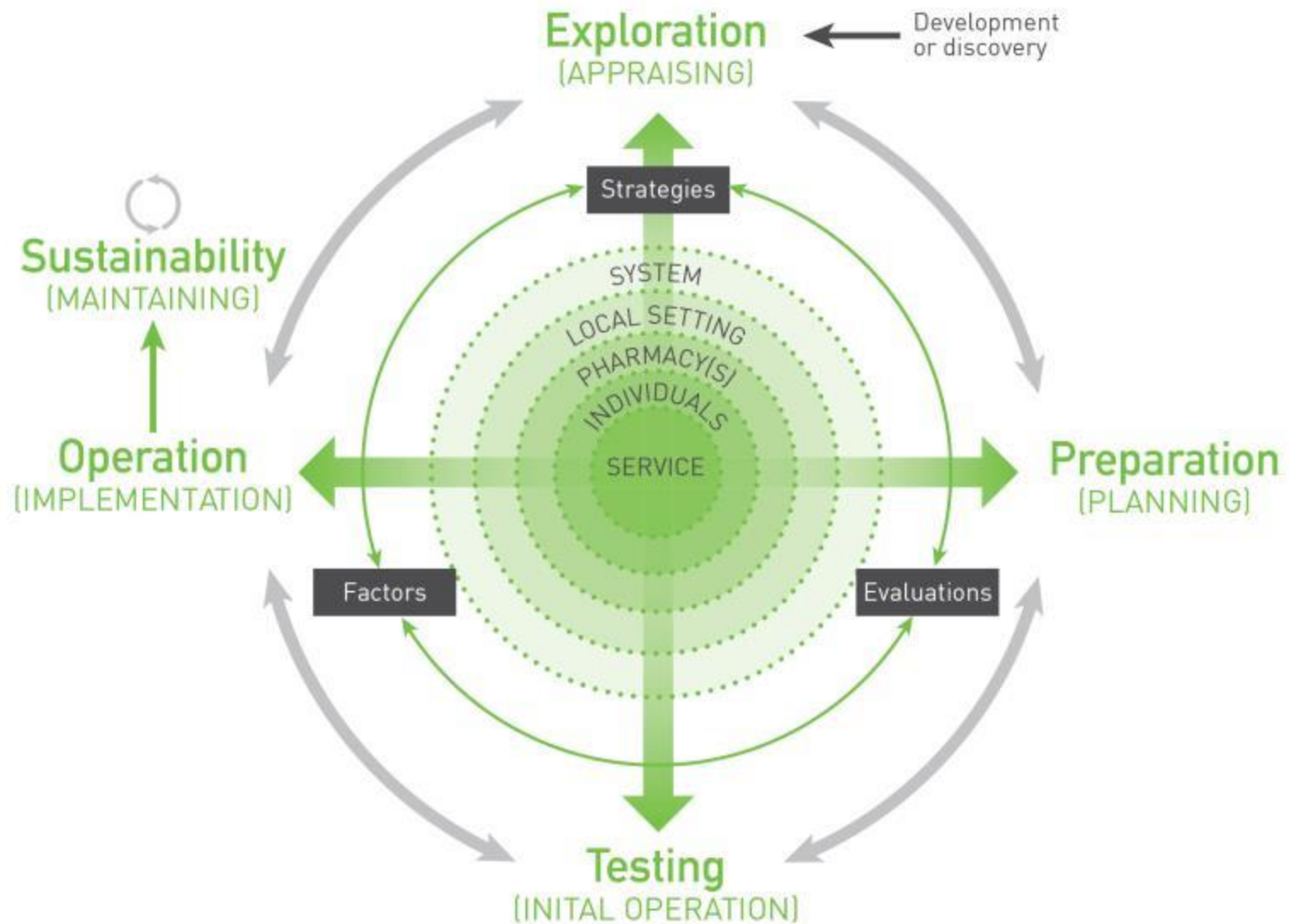


www.healthdestinationpharmacy.com.au

SAG009



Framework for Implementation of Service in Pharmacy (FISpH)¹



Happy workshopping!



“PSA is the peak national body for pharmacists”